



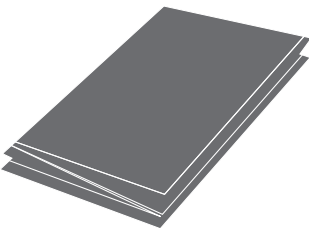
# SPR15 ANTI-BLUE LIGHT GLASS SCREEN PROTECTOR

## USER MANUAL

### WHAT'S IN THE BOX:



2 X SCREEN PROTECTORS



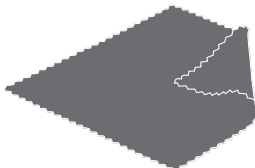
1 X MANUAL



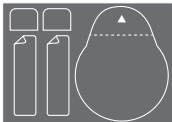
2 X WET CLOTHS



2 X DRY CLOTHS



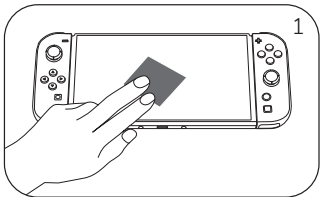
1 X CLEAN CLOTH



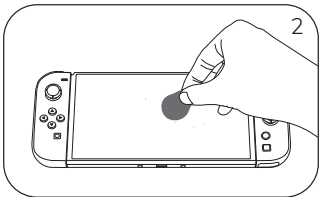
2 X SCREEN PROTECTOR  
APPLICATION KITS

### INSTALLATION & USE

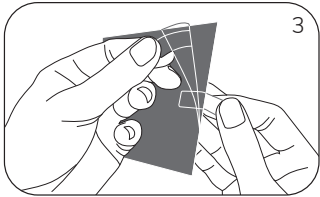
1. Clean the screen with a wet and dry cloth.



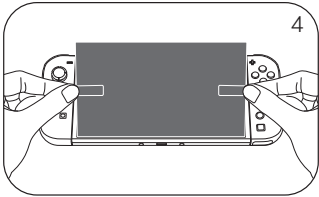
2. Use dust removal stickers to clean fine dust.



3. Put the guide sticker on the screen protector, and then tear off the protective film of the screen protector.



4.Carefully paste the screen protector onto the screen and align it.



5. Use a soft cloth to clean the screen protector after installation.

